



icaste JCommSerial 4.0

For 32 Bit Windows 7, Vista, XP, Server 2003, Server 2008 and Windows 2K

JCommSerial 4.0

Installation Guide

Book 1 of 1

Document Release: Final 1.0

Date: July. 2010

Copyright 2008 icaste LLC. All rights reserved.

Produced in United States

The information in this document is subject to change without notice. The statements, configuration, technical data, and recommendations in this document are believed to be accurate and reliable, but are presented without express or implied warranty. Users must take full responsibility for their applications of any products specified in this document. The information in this document is proprietary to icaste LLC.

Icaste, icaste logo, JCommUSB and JCommSerial are trademarks of icaste LLC.

Microsoft, Windows, Windows Driver Framework, Visual C++, and Visual Studio are registered trademarks of the Microsoft Corporation.

Java is a registered trademark of Sun Microsystems Inc.

Revision History

July 2010

Final 1.0. New document for JCommSerial 4.0.

Contents

Revision History	2
July 2010	2
Contents	2
About this Document	3
Subject	3
Applicable Solutions	3
Intended Audience.....	3
Notations	3
Sample Code	3
Sample Code Comments	3
Additional Code Comments	3
Overview	4
Prerequisites.....	4
Developer	4
Tools	4
Dependencies	4
API Installation Instructions	5
Acquiring and Extracting the API	5
Installing the API.....	5
Testing the API	8
Using the API.....	9
Un-Installing the API.....	9
Support.....	9

About this Document

Subject

This document describes the installation process for JCommSerial 4.0 API.

Applicable Solutions

JCommSerial 4.0

Intended Audience

This document is intended for software developers well versed in Java and familiar with application installation on the Windows 32 bit platform.

Notations

Sample Code

All code samples will be in Courier 9pt font black.

These are samples of the actual compiled source code

`Example Source Code`

Sample Code Comments

All code sample comments will be in Courier 9pt font green.

These are samples of the actual source code comments.

`Example Sample Code Comments`

Additional Code Comments

All additional comments to sample source code will be Arial 9pt blue italic.

These are additional comments for clarity and are not, and shall not be included in the source code.

Example Additional Comments to Source Code

Overview

Prerequisites

Developer

Understanding of Java is required.

Understanding application installation on the Windows 32 bit OS is required.

Tools

A working install of the Java run time environment is required to run the API.

A working install of the Java software development kit is required to develop applications that leverage the API.

Dependencies

The following 32 bit Windows platforms are supported:

- Windows 7
- Windows Vista
- Windows Server 2008
- Windows XP (SP3)
- Windows Server 2003
- Windows 2000

API Installation Instructions

Acquiring and Extracting the API

The API is usually delivered as a direct download from the icaste.com website checkout confirmation page. If the user encounters problems downloading the API from the checkout confirmation page they must contact support@icaste.com to obtain an alternate download link

The API is delivered in a single ZIP file, the contents of which should be extracted to a temporary location.

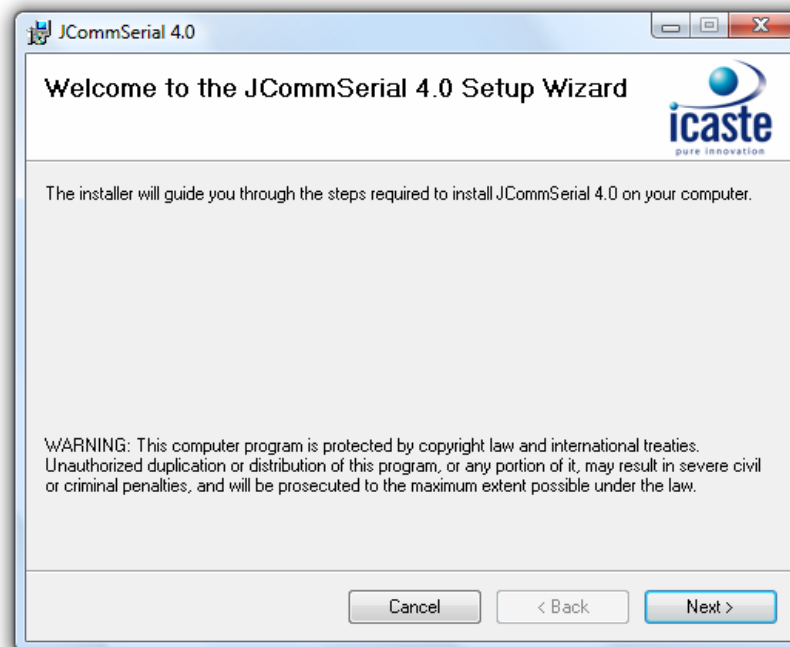
The API ZIP contains the following files:

- Setup.exe
- JCommSerial_4_0.msi
- JCommSerial_4_0_Installation_Guide.pdf
- JCommSerial_License_Agreement.pdf

Installing the API

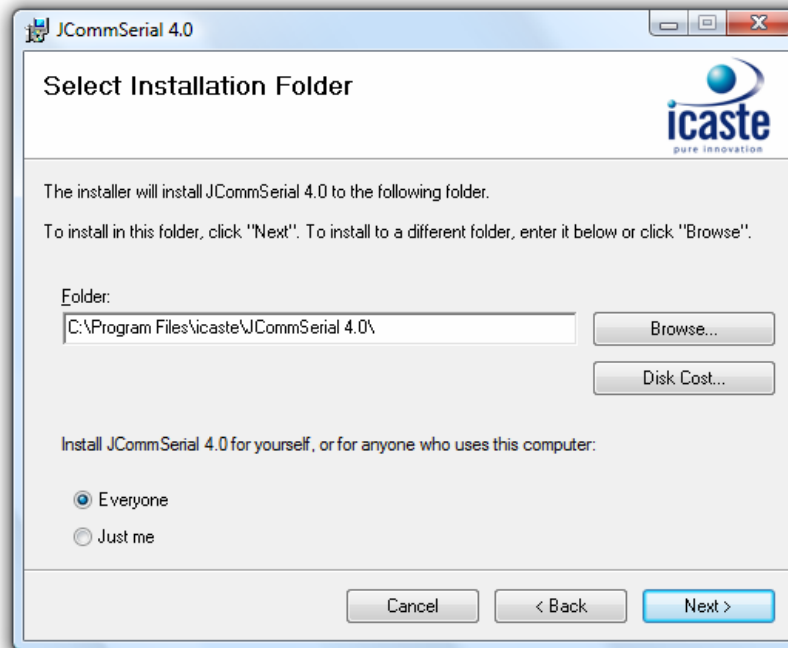
Follow these steps to install the API

1. Navigate to the temporary folder that holds the extracted files.
2. Double click on "setup.exe" to start the setup wizard.
3. When the setup wizard starts click "next" to continue.

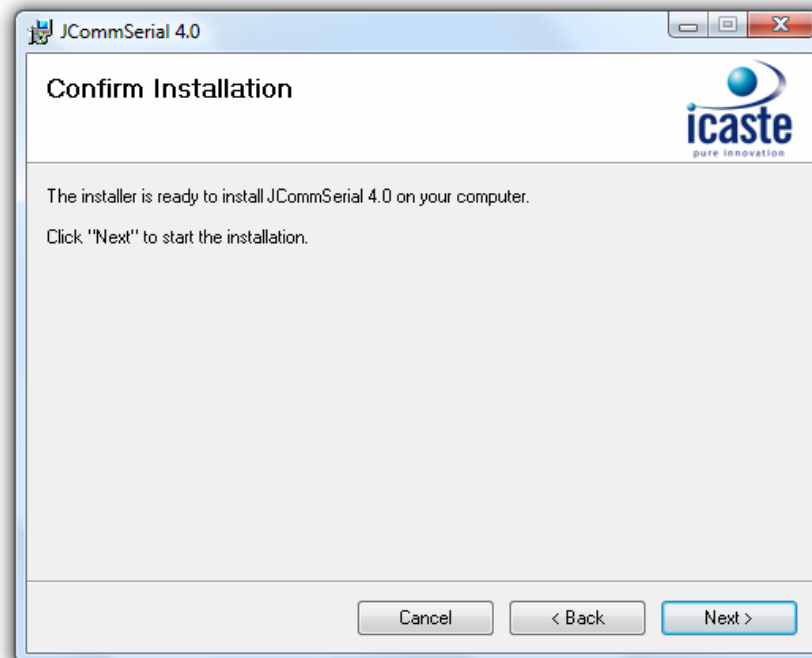


Installation Guide

- The setup wizard will prompt for the API install directory. The API installation directory can be left at the default value or changed by clicking “browse”. Choose the installation directory and click “next”.

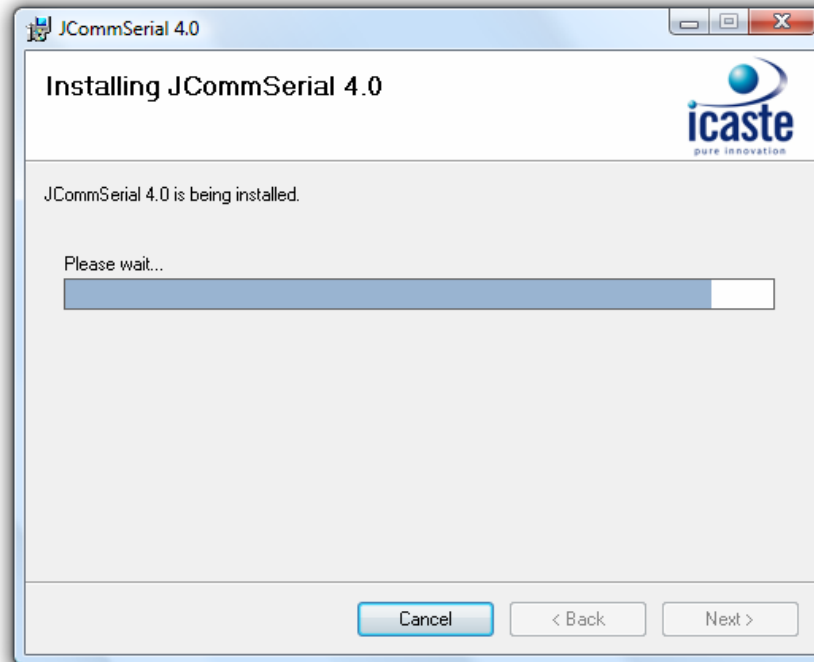


- At the confirmation page click “next” to begin the installation.

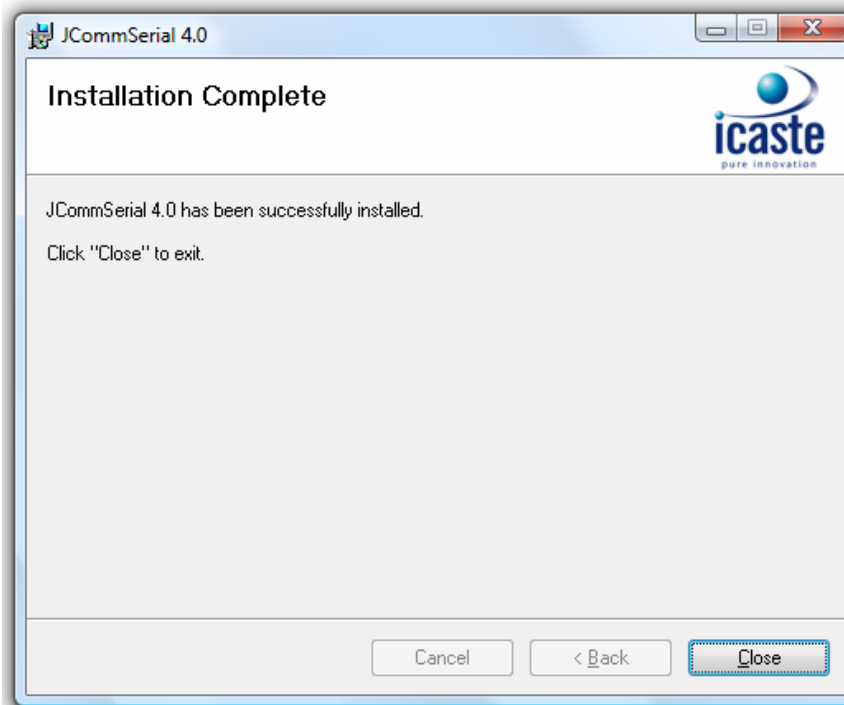


Installation Guide

6. The setup wizard will install the API, this can take several minutes.



7. When the installation is complete click "close" to exit the setup wizard.



Testing the API

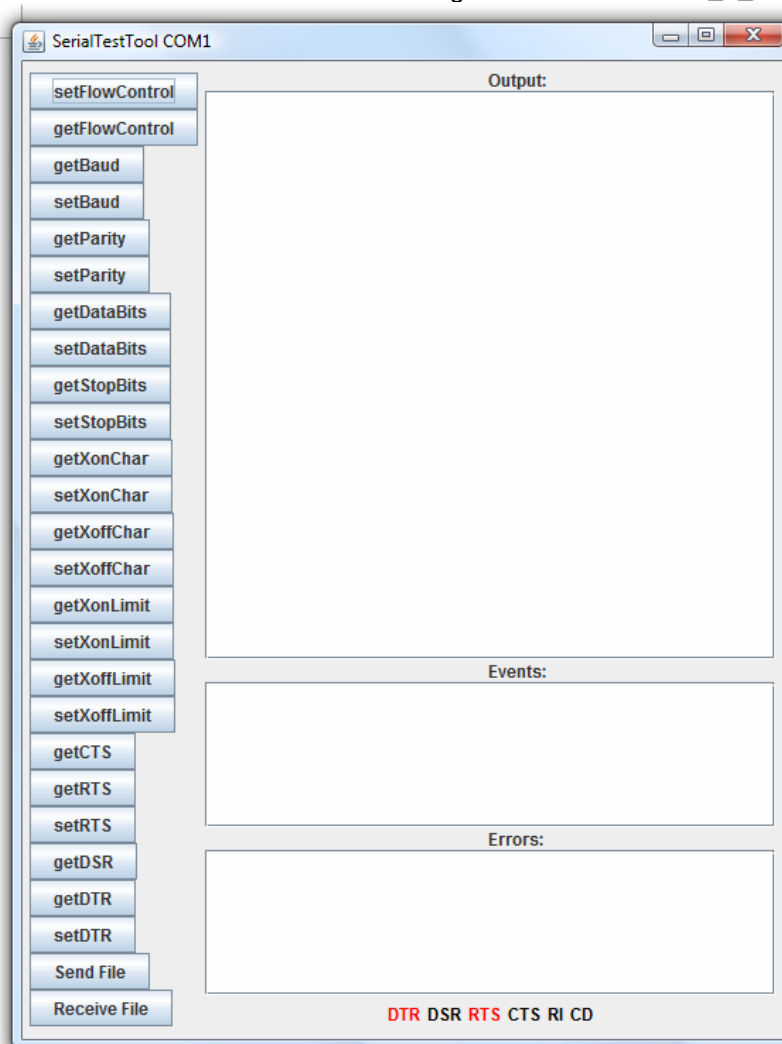
To test the API navigate to:

“Start->Programs->JCommSerial_4_0->SerialTestTool.bat”

This should launch the API test utility.

The API test utility connects to COM1 at 9600bps, with 8 data bits, no parity and 1 stop bit by default. All keyboard input is directed to COM1, any data received on COM1 is displayed in the “Output” window.

All JCommSerial get/set functions can be tested using the buttons on the left. The source code for the API test utility can serve as a basis for your application, and can be found in “Start->Programs->JCommSerial_4_0”.



Using the API

Follow these steps to use the API in your application:

1. Copy JCommSerial_4_0.jar to your project directory or workspace. JCommSerial_4_0.jar can be found in the install directory you selected during installation
2. Add JCommSerial_4_0.jar to your classpath or netbeans project library.
3. Use the following import statement in your Java Class file:

```
import com.icaste.JCommSerial.*;
```

Un-Installing the API

Follow these steps to un-install the API:

1. Navigate to "Control Panel -> Programs and Features".
2. Locate the JCommSerial API, left click and select "Remove".
3. Follow the un-install wizard to complete the un-install.

Support

If you encounter problems during the API installation process, contact support@icaste.com for best effort support..